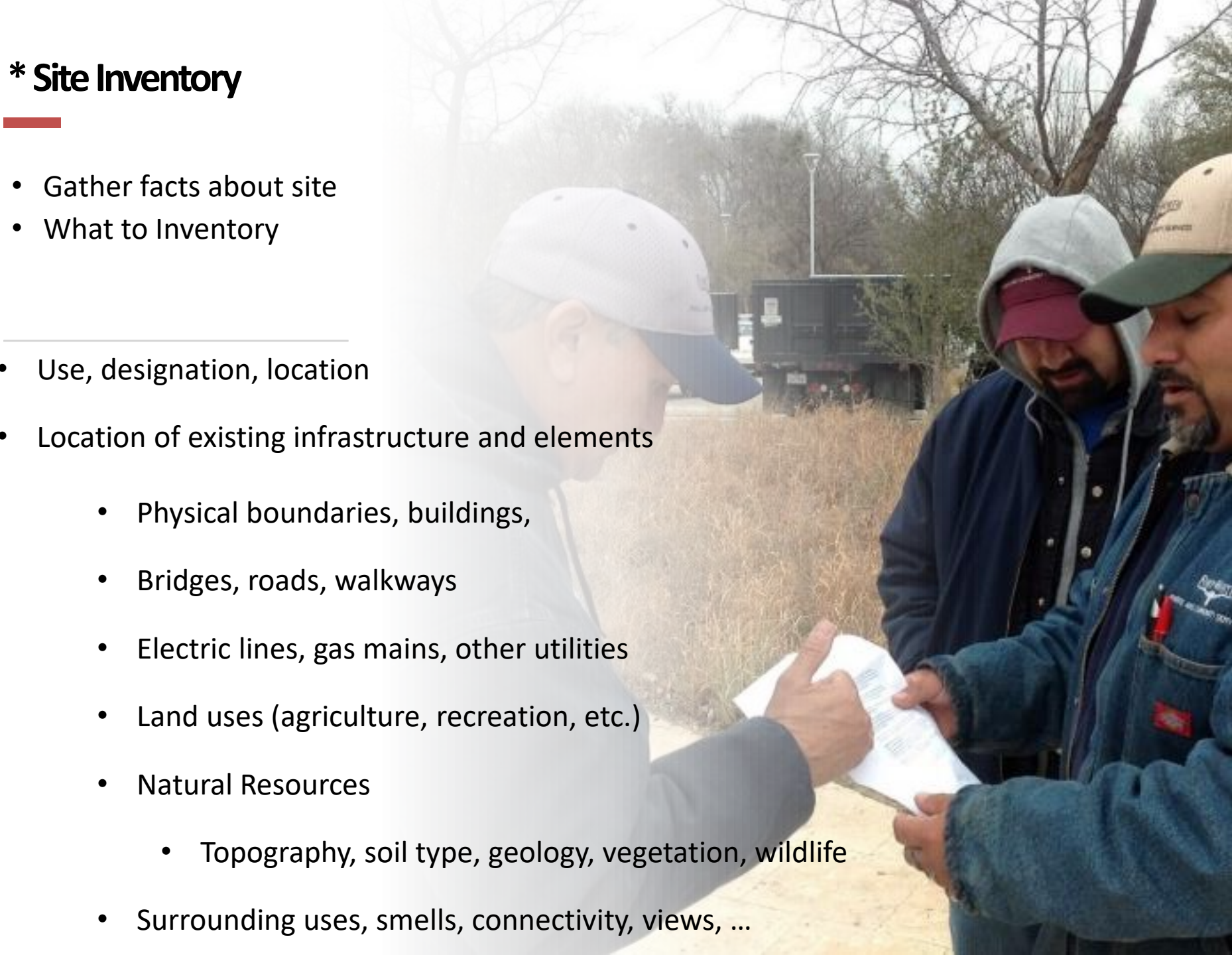


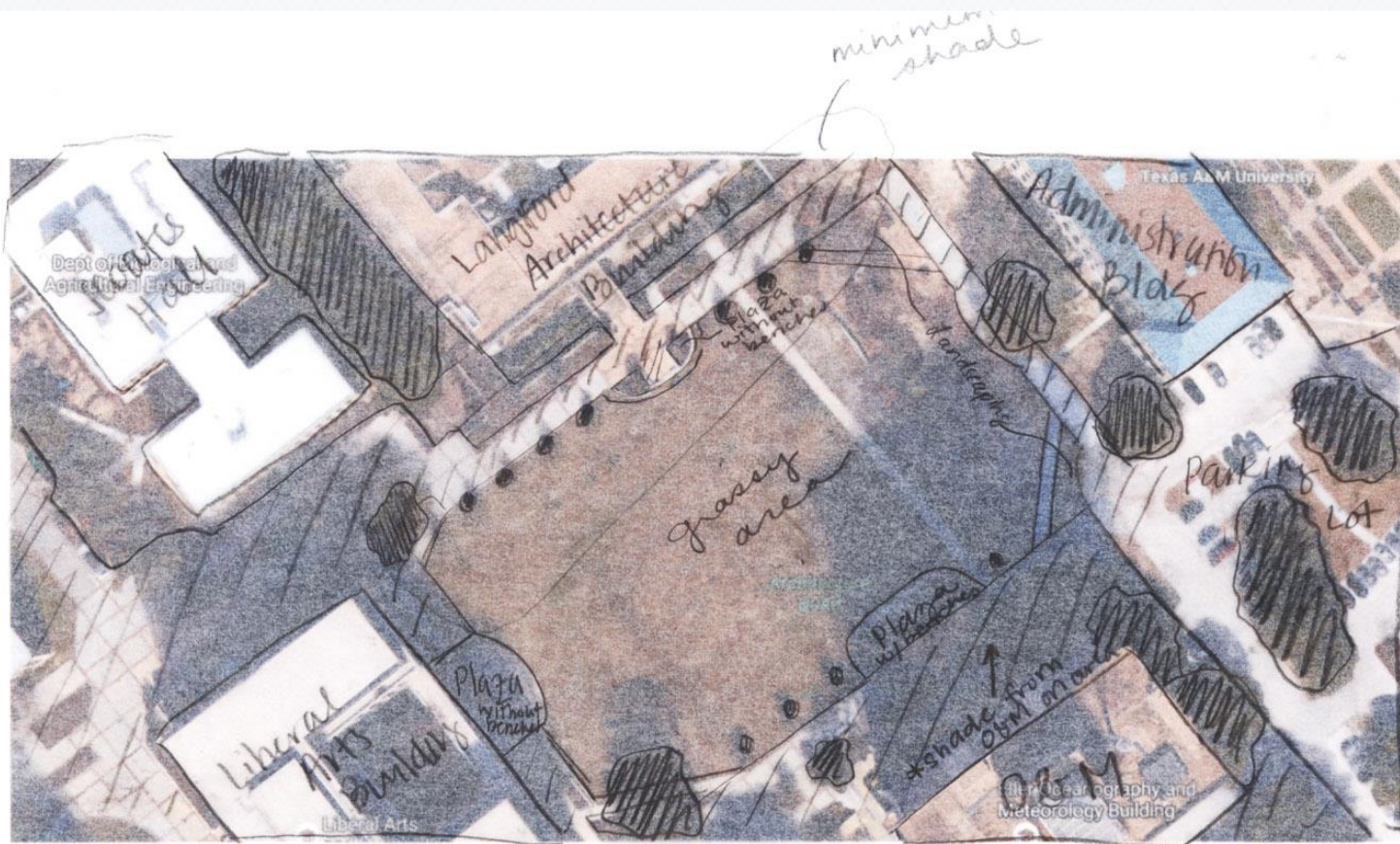
* Site Inventory

- Gather facts about site
- What to Inventory

-
- Use, designation, location
 - Location of existing infrastructure and elements
 - Physical boundaries, buildings,
 - Bridges, roads, walkways
 - Electric lines, gas mains, other utilities
 - Land uses (agriculture, recreation, etc.)
 - Natural Resources
 - Topography, soil type, geology, vegetation, wildlife
 - Surrounding uses, smells, connectivity, views, ...






* Site Inventory








General Notes:

- Corps of Cadets uses area for sports and recreation
- Middle grassy area utilized by Geography, Civil Engineering, etc. classes
- Space used for tailgating
- Aggie Service Dogs organization uses space for training

-  sidewalks
-  -trees (large)
-  - small trees

Site Inventory

Color	Item
	No fence
	Current lights
	Overgrown brush
	Police maintenance drive

Color	Item
	Benches
	Current lights
	Shade
	Signage
	Playground





Site Inventory

VS

Site Analysis



**Issue ...
Opportunity**

Site Inventory